

# BRIDGES

## *SlipNOT® Applications*

### BRIDGE INSTALLATIONS

- ▶ WASHINGTON STATE  
DEPARTMENT OF  
TRANSPORTATION
- ▶ CHICAGO RIVERWALK
- ▶ WISCONSIN  
DEPARTMENT OF  
TRANSPORTATION
- ▶ OHIO RIVER BRIDGES
- ▶ HILLSBORO BRIDGE
- ▶ KENNEDY BRIDGE
- ▶ NEW YORK  
DEPARTMENT OF  
TRANSPORTATION

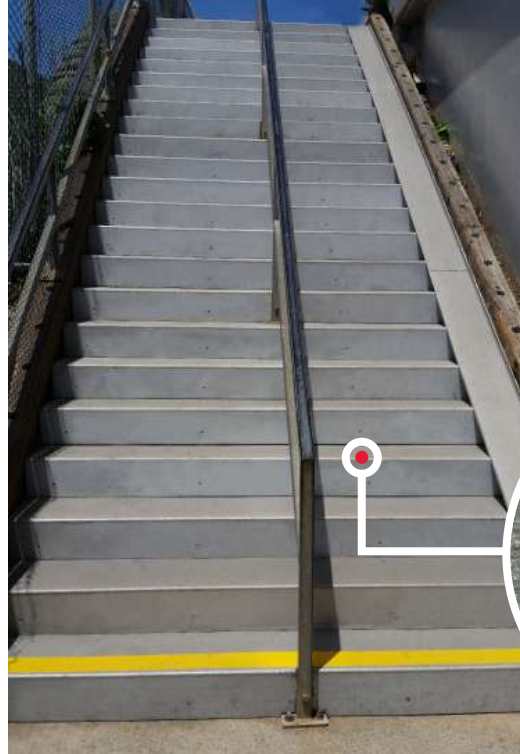


### DUSABLE BRIDGE

**LOCATION:** Chicago, IL

**SOLUTION:** The DuSable Bridge is a bascule bridge that carries Michigan Ave. across the main stem of the Chicago River in downtown Chicago. Due to the heavy traffic present on this bridge, SlipNOT® provided Grade 2 steel plates which were painted to prevent rust and corrosion.



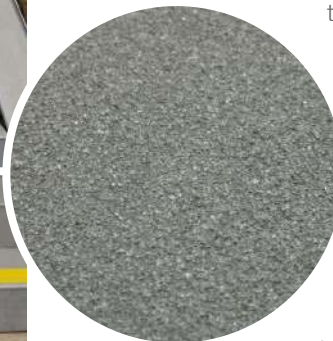


## GOLDEN GATE BRIDGE

**LOCATION:** San Francisco, CA

**SOLUTION:** SlipNOT® was contacted by the Golden Gate Bridge District for a slip resistant solution to multiple stairways leading to the bridge's main level. SlipNOT® Grade 2 aluminum stair treads and aluminum plates were provided for the stairwell and the bike runner fabricated per specification.

Retrofitting the treads over the existing wooden steps and ramp by bolting was the best solution. The aluminum treads are a lightweight and corrosion resistant product that will withstand the demanding foot traffic and outdoor elements for years to come.



## TESTIMONIALS //

“

Very nice product that holds up well and offers slip resistance protection in slippery locations.

**ENGINEER at CAMPBELLS SOUP COMPANY**

“

Great service. All questions and clarifications were asked before the application was applied.

**PROJECT MANAGER at SAINT LOUIS ZOO**

“

Everyone was very nice, and I was able to get a same day pickup on the product after I delivered the material.

**EXHIBIT TECH at ANN ARBOR HANDS-ON MUSEUM**

## FDOT BYCICLE LANES

**LOCATION:** Fort Lauderdale, FL

**SOLUTION:** The Florida Department of Transportation (FDOT) has proactively sought to improve public safety by increasing slip resistance on expansion joint covers, subway emergency exit doors, pedestrian bridge plates, bicycle safety lanes, and vault covers. Recently, FDOT contacted SlipNOT® Metal Safety Flooring for options to improve cyclist's safety on a District 4 bridge in Fort Lauderdale, FL.





# CITY OF PORTLAND

**LOCATION:** Portland, OR

**SOLUTION:** SlipNOT® provided the The City of Portland with aluminum Grip Plate®. Aluminum plate was the ideal choice for the project because it is a light weight material that will not weigh down the bridges, and was also ideal for their floating docks. Aluminum is corrosion resistant and will withstand years of heavy traffic from vehicles, bikers and pedestrians, as well as the weather elements present in Portland.



## TEXAS DOT

**LOCATION:** McKinney, TX

**SOLUTION:** After sending over detailed drawings of the project and speaking with a SlipNOT® sales representative, the Street Superintendent of Texas DOT was confident in utilizing SlipNOT® for the project. SlipNOT® has been utilized for various projects in Texas, specifically expansion joint cover applications. They received Grade 2 steel galvanized covers that were manufactured to specifications with countersunk holes, beveled edges, 1"x1" chamfers, and a 1/4" center crown.

**TO LEARN MORE ABOUT SPECIFIC DETAILS ON THE PROJECTS FEATURED  
IN THIS FLYER, PLEASE VISIT THE CASE STUDY SECTION OF OUR WEBSITE  
at [WWW.SLIPNOT.COM/CASE-STUDIES](http://WWW.SLIPNOT.COM/CASE-STUDIES)**



## WAYNE COUNTY BRIDGE

**LOCATION:** Grosse Ile, MI

**SOLUTION:** Aluminum ADA punched plank grating with SlipNOT® was specified for the sidewalk grating because of the extreme durability and non-slip properties. In total, over 9,000 square feet of 2-1/2" x 3/16" aluminum extruded plank grating was coated with SlipNOT® Grade 2 slip resistant aluminum coating. Aluminum plank grating was chosen for the sidewalk grating because of the non-corrosive and weightlessness qualities.