

DIAMOND PLATE

SlipNOT® Customer Supplied & Retrofit Applications



FORD MOTOR COMPANY

LOCATION: Dearborn, MI

SITUATION: Diamond plate that was originally coated with epoxy began to chip after a short amount of time. During a small plant shut down, Ford contacted SlipNOT® and sent in their plates (from the rinse off area of the final assembly line) to be coated with Grade 2 steel painted safety yellow.

ADDITIONAL INSTALLATIONS & RETROFITS

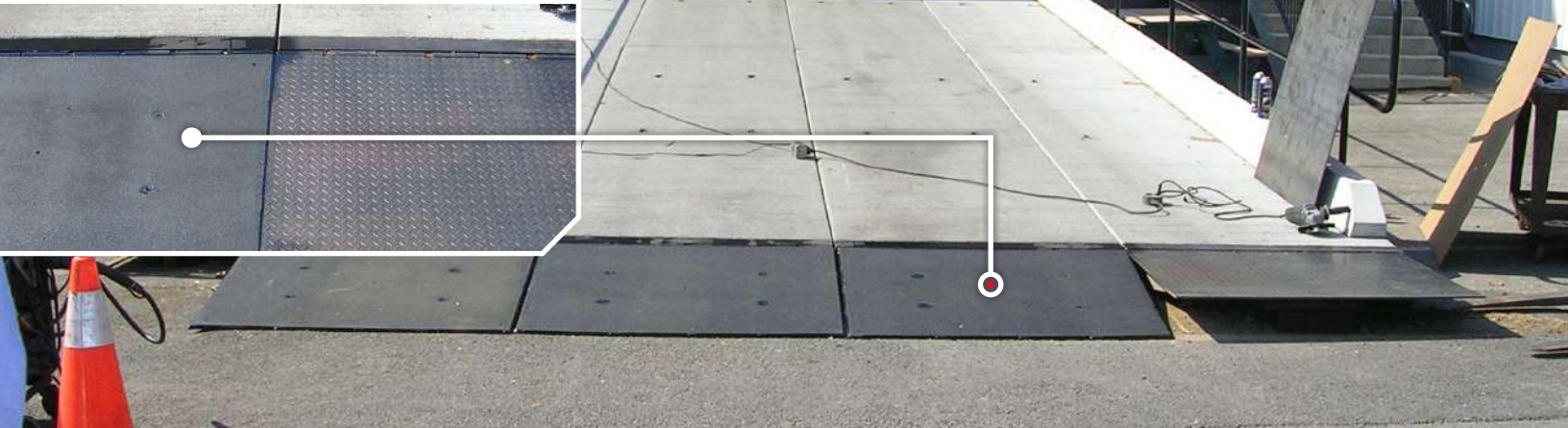
- ▶ **FAGE**
stainless steel stair treads
- ▶ **PEPPERIDGE FARM**
aluminum stair treads
- ▶ **MCKEE FOODS**
stainless steel plates
- ▶ **GENERAL MILLS**
grating tread
- ▶ **BAY AREA NEWS GROUP**
steel stair treads
- ▶ **TOYOTA**
customer supplied steel



DUQUESNE LIGHT

LOCATION: Pittsburgh, PA

SITUATION: SlipNOT® provided four custom cut pieces of A-36 carbon steel plate which were delivered with 3/8" plug weld holes for an easy retrofit installation on site.



TESTIMONIALS //

“

Approximately one year ago, one of my mechanics became aware of your product. At that time, we did a trial and presented your plate to the Safety Committee. They were very pleased and we have been using it since.

FACILITIES MANAGER at MACLEAN CURTIS

“

The increased traction when the platform gets wet has garnered a favorable response from our production associates. We're very pleased.

MAINTENANCE at LAMBENT TECHNOLOGIES

“

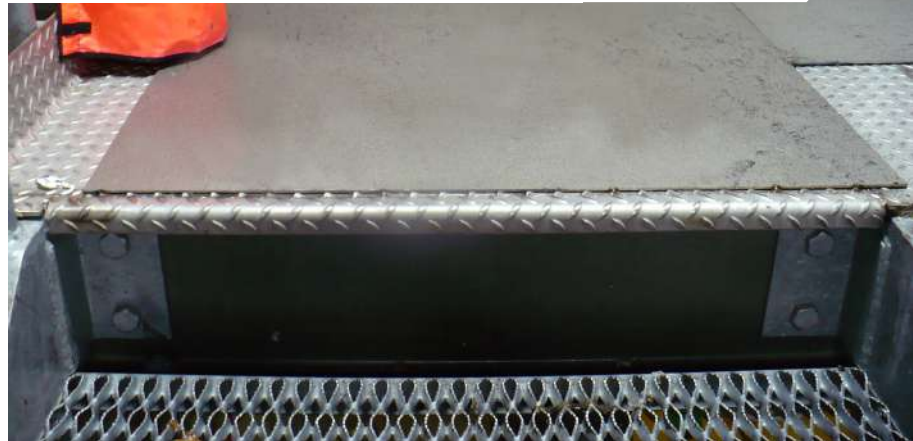
When the diamond plate got wet from hosing off the trucks, they became very slippery and dangerous for the workers to use. Your product has really helped with boot grip.

PROJECT MANAGER at ATLAS AUTOMATION

LAMBENT TECH

LOCATION: Pittsburgh, PA

SITUATION: 1/8" Grade 2 stainless steel Grip Plate® was retrofitted over diamond plate landings and walkways for slip resistance in a wet environment.



SYNDER'S-LANCE

LOCATION: Charlotte, NC

SITUATION: One of the largest salty snack companies were provided with six 3/16" x 11" x 24" 5052 Grade 1 aluminum stair treads and 1-1/2" nosings with four countersunk holes per tread for retrofits.



BEFORE



AFTER