

FOOD & BEVERAGE

SlipNOT® Applications

TOP CUSTOMERS

- ▶ NESTLE USA
- ▶ BEL BRANDS USA
- ▶ BURGER KING
- ▶ BUSH BROTHERS AND COMPANY
- ▶ CAMPBELL SOUP COMPANY
- ▶ CARGILL, INC.
- ▶ COCA-COLA®
- ▶ CONAGRA FOOD GROUP
- ▶ FAGE USA DAIRY INDUSTRY, INC.
- ▶ GENERAL MILLS, INC.
- ▶ HILLSHIRE BRANDS CO.
- ▶ LEPRINO FOODS
- ▶ AMY'S KITCHEN
- ▶ OCEAN SPRAY CRANBERRIES
- ▶ SARA LEE FOODS
- ▶ SNYDER'S-LANCE, INC.
- ▶ TYSON FRESH MEATS INC.
- ▶ UNILEVER



AMERICAN WORLDWIDE FOOD AND BEVERAGE COMPANY

LOCATION: Wisconsin
SOLUTION: SlipNOT®'s Grade 2 stainless steel floor plates were installed on platform decking and stair treads around processing tanks. The chemical and corrosion resistance, durability, traction, and longevity were appealing to the food processing company, reducing the risk of slip and fall accidents and creating safe and productive work areas.



ORGANIC FOOD PROCESSOR

LOCATION: White City, OR

SOLUTION: An organic food manufacturer, had extremely slick flooring around their stainless steel production tanks. Their Plant Engineer contacted SlipNOT® for a slip resistant solution. SlipNOT® provided Grade 2 non-slip stainless steel plates and drain covers that hold up well to food particles, harsh chemicals, continuous power washing, and constant use.



TESTIMONIALS //

“

Very nice product that holds up well and offers slip resistance protection in slippery locations.

ENGINEER at CAMPBELLS SOUP COMPANY

“

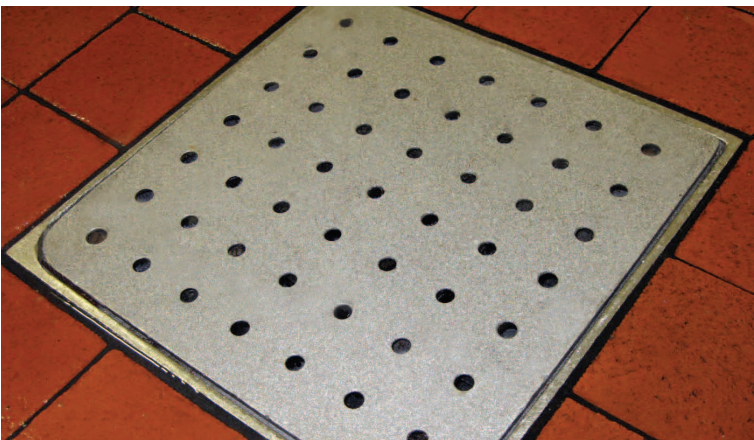
Great products, service, etc. Helps achieve safety goals in a big way!

PURCHASING at KENT QUALITY FOODS

“

This was very easy to work with and weld - would highly recommend. Keep up the great work!

MAINTENANCE COORDINATOR at COCA-COLA



KENT QUALITY FOODS

LOCATION: Grand Rapids, MI

SOLUTION: Due to the oils, fats, and grease from the franks and sausages, Kent Quality Foods shipped their existing drain covers, grating treads, and grating platform to SlipNOT® for a slip resistant stainless steel coating.



TYSON FOODS, INC.

LOCATION: Wilkesboro, NC

SOLUTION: Tyson Foods was in need of a high traction product for their portable rolling platforms. SlipNOT® was contacted and provided non-slip stainless steel stair treads which were chemical and corrosion resistant.



According to NFSA, floors and flooring materials contribute to more than two million fall injuries each year. Approximately 60% of falls are on the same level.

THE TURF CLUB BAR & GRILL AT WALT DISNEY

LOCATION: Saratoga Springs, FL

SOLUTION: The Turf Club kitchen at Walt Disney replaced their existing bare metal grating with SlipNOT®'s aluminum ADA diagonal punched plank. The slip resistant plank provides drainage and additional surface coverage for employees.



BEEF PROCESSING FACILITY

SOLUTION: SlipNOT® provided stainless steel plate material that was fabricated to detailed specifications, including kick plates, cut out's, notches, welds, nosings, and risers. Due to the fats, oil, and cleaning solutions throughout the production plant, a slip resistant and food safe product was needed.





VOORTMAN COOKIES

LOCATION: Burlington, ONT

SOLUTION: Voortman's was in need of a slip resistant portable staircase to aid in the cleanup of their production line as well as some fixed landings in order to access their cookie wire cutting machines. SlipNOT® provided various sized 1/8" thick 304 stainless steel material.



COCA-COLA®

LOCATION: Atlanta, GA

SOLUTION: SlipNOT® supplied 19W4 Grade 2 galvanized steel grating and stair treads for Coca-Cola's bottling facility. The grating provided a high traction surface for employees that will last for years to come.



NSF registered for use in food processing facilities; SlipNOT's high traction stainless steel products are engineered for applications where safety, sanitation, and durability are vital.

PINNACLE FOODS INC.

SOLUTION: Pinnacle Foods installed 3/16" thick SlipNOT® stainless steel stair treads for a fixed stairway in their packaging area. Since this is a sanitary environment, all welds were ground/polished and spacers were put between the treads and stringers to allow for cleaning.

