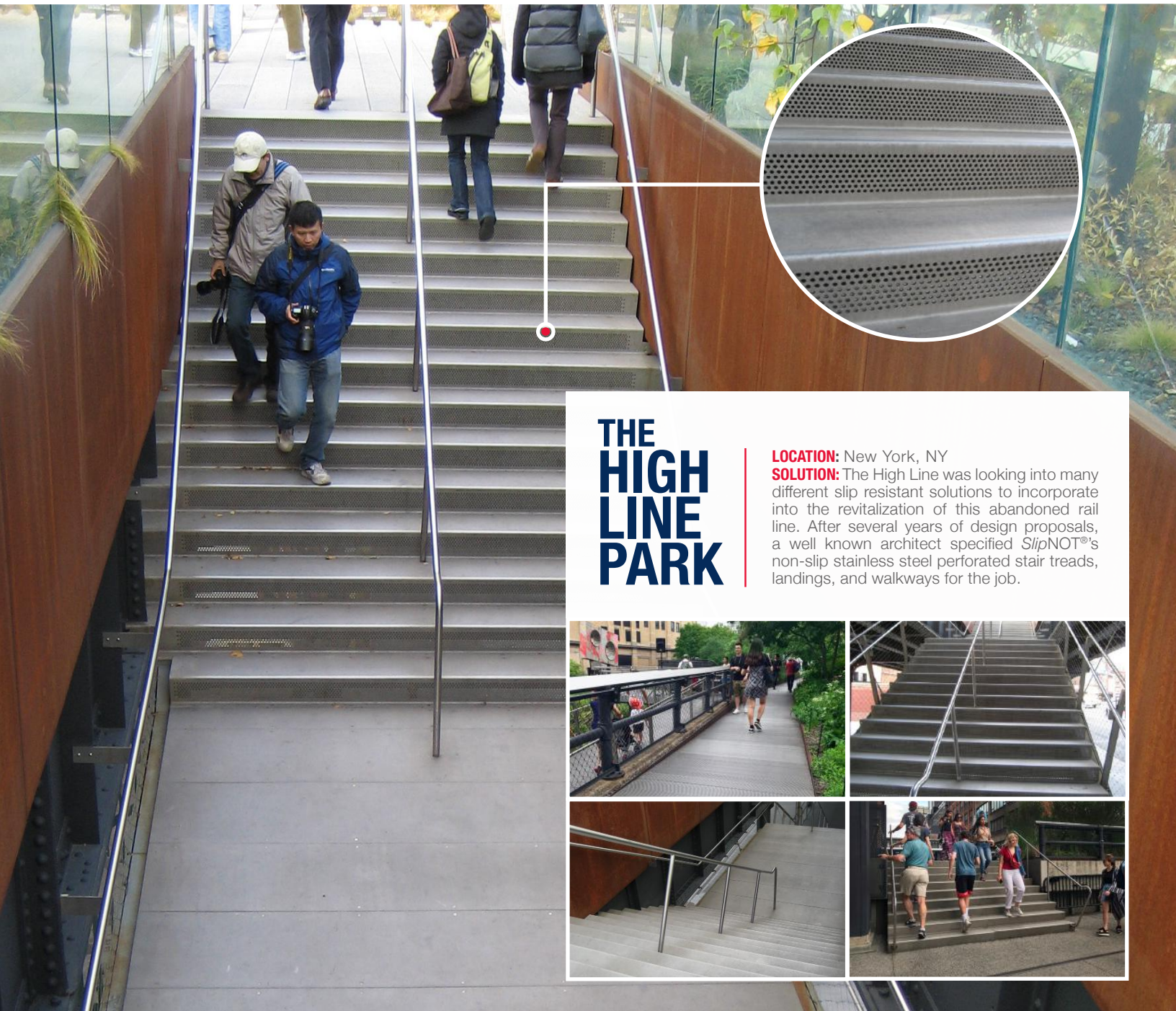


RECREATION

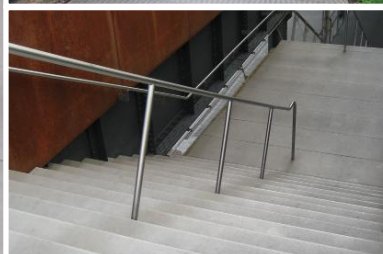
SlipNOT® Applications



THE HIGH LINE PARK

LOCATION: New York, NY

SOLUTION: The High Line was looking into many different slip resistant solutions to incorporate into the revitalization of this abandoned rail line. After several years of design proposals, a well known architect specified *SlipNOT®*'s non-slip stainless steel perforated stair treads, landings, and walkways for the job.



LIBERTY PARK

LOCATION: New York, NY

SOLUTION: Liberty Park is a one-acre elevated public park at the World Trade Center, overlooking the 9/11 memorial pools. SlipNOT®'s non-slip Grade 2 stainless steel surface was applied to tree grates, access hatches, grating trench drains, and stainless steel nosings.



SLIPNOT TESTIMONIALS

“

Very nice product that holds up well and offers slip resistance protection in slippery locations.

ENGINEER at **CAMPBELLS SOUP COMPANY**

“

Have no literature personally. Bought once under recommendation and have used ever since

MAINTENANCE at **CMWA**

“

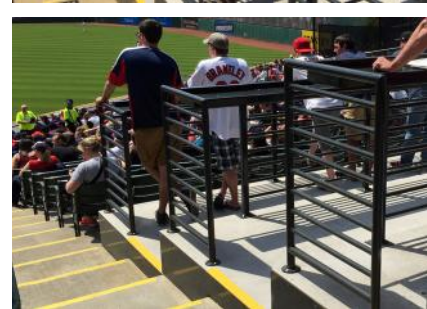
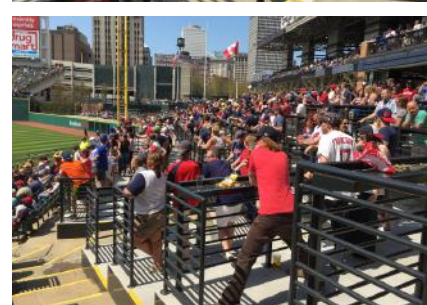
Your product is awesome and will purchase again. Every aspect dealing with your company was awesome.

VICE PRESIDENT at **FLOW DYNAMICS**

PROGRESSIVE FIELD

LOCATION: Cleveland, OH

SOLUTION: Visitors to the field benefit from not only the aesthetic qualities of this new space but also from the safety of the aluminum plates installed. Inclement weather and spilled beverages are no match for the abrasive surface that the aluminum plates provide.





SPOTLIGHT ON BROADWAY

LOCATION: Times Square, NY

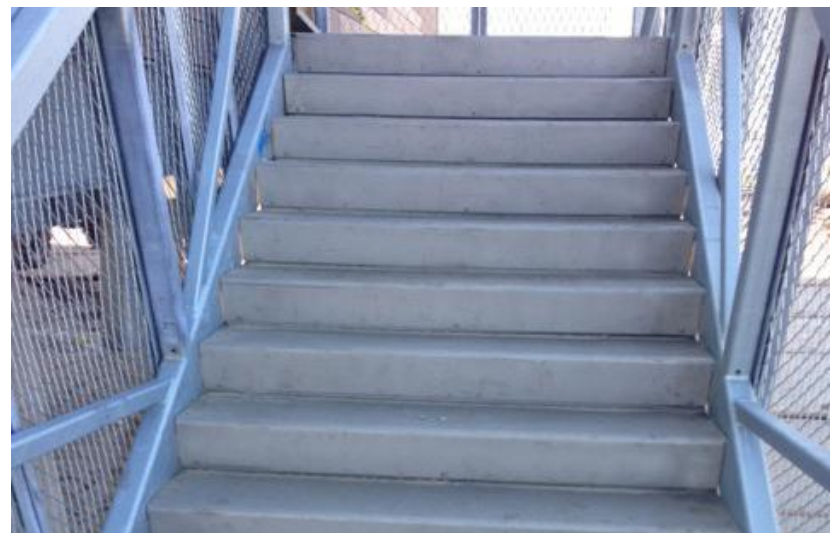
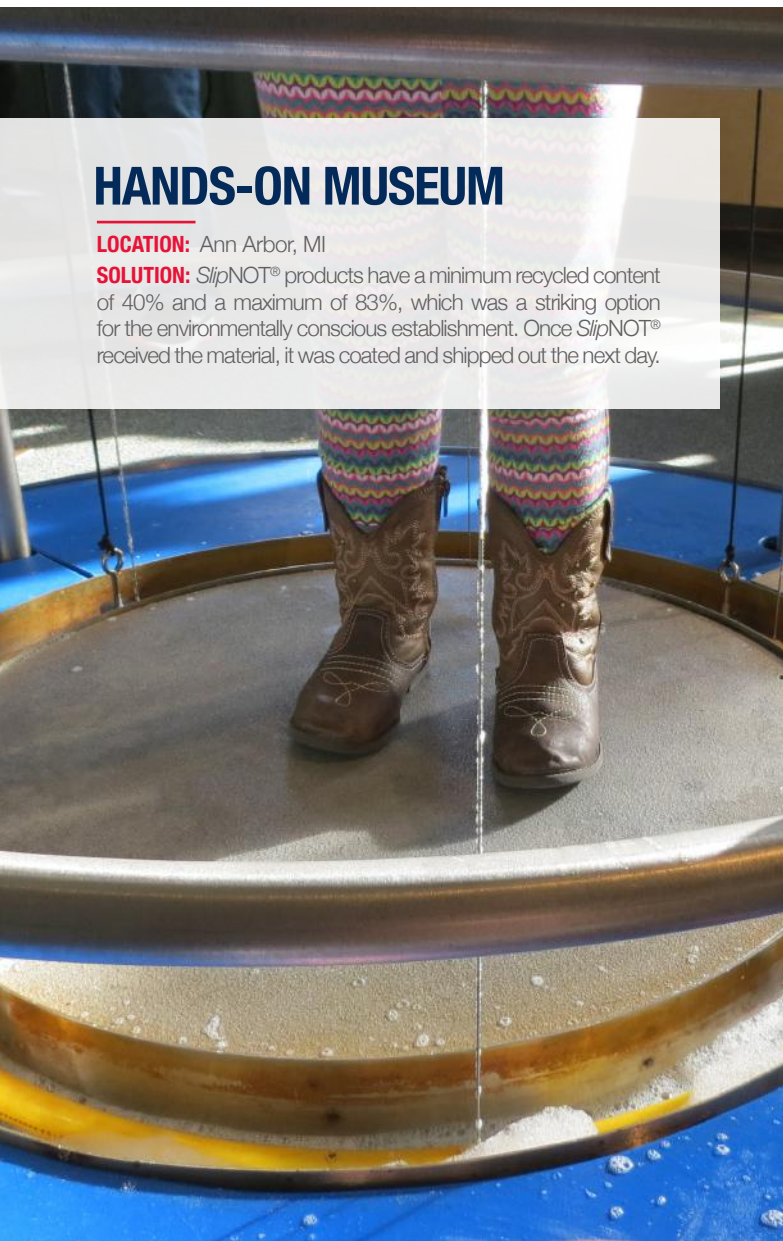
SOLUTION: Located directly in the heart of Times Square, the stainless steel gripped surface of *SlipNOT*®'s coating not only provided higher traction for pedestrians, but also added another dimension to the tribute piece, exhibiting a sleek and modern aesthetic.



HANDS-ON MUSEUM

LOCATION: Ann Arbor, MI

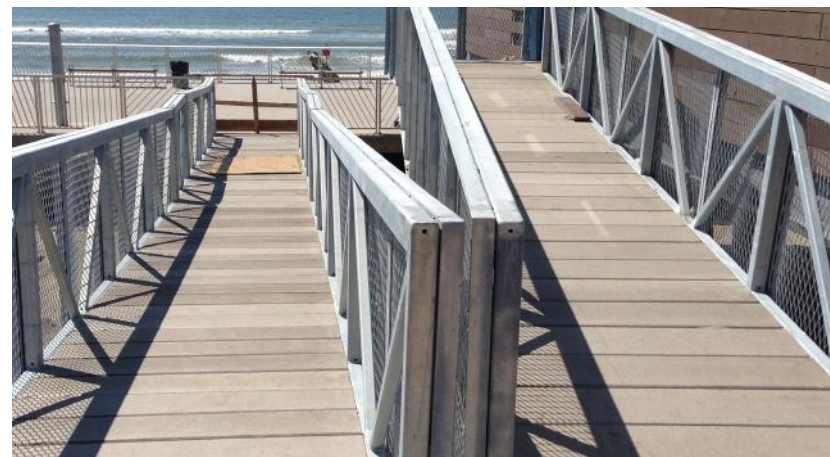
SOLUTION: *SlipNOT*® products have a minimum recycled content of 40% and a maximum of 83%, which was a striking option for the environmentally conscious establishment. Once *SlipNOT*® received the material, it was coated and shipped out the next day.



HURRICANE SANDY RELIEF PROJECT

LOCATION: Coney island, NY

SOLUTION: Pedestrian safety was a key factor in the design for the stairs and ramps leading to comfort stations that were recently built, due to elements that were being tracked in from the beach.



SPADINA WAVE DECK

LOCATION: Toronto, CAN

SOLUTION: SlipNOT® recommended Grade 2 stainless steel flat bar for its aesthetically pleasing appeal, non-slip properties, and corrosion resistance. The stainless steel flat bar will remain slip resistant against the extreme outside weather environments and heavy use from pedestrians and cyclists.



LINCOLN CENTER

LOCATION: New York, NY

SOLUTION: The world's leading performing arts complex, recently introduced an ADA heated pedestrian bridge that connects the outer lobby of the Rose Building to Hearst Plaza. The bridge provides a safe crossing for visitors and eases the passage between the north and south campuses. In the final stage of construction, SlipNOT®'s Grade 2 stainless steel plates were formed and bolted to the structure, giving pedestrians a high traction surface.



WALT DISNEY WORLD

LOCATION: California & Florida

SOLUTION: SlipNOT® applied their Grade 2 stainless steel surface to numerous aluminum plates that served as carousel stirrups on King Arthur's Carrousel. After the first successful installation, the same step ups replaced the stirrups on Cinderella's Golden Carrousel at Walt Disney World.