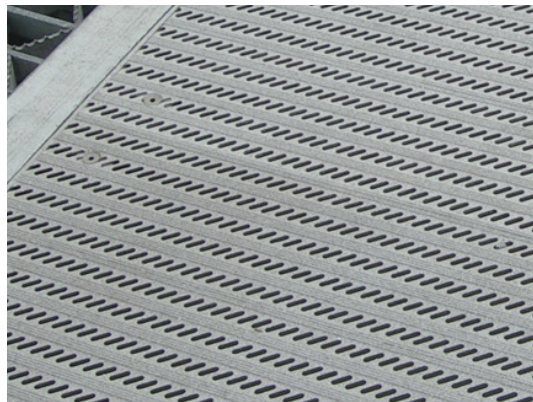


# GROSSE ILE BRIDGE

GROSSE ILE, MI

*Plank Grating Used for Sidewalk Renovations on Grosse Ile Bridge in Michigan*



## THE SITUATION

Grosse Ile, MI, an island on the Detroit River between Canada and Detroit, MI, was doing massive renovations to the Wayne County Bridge (also known as the “free bridge”) on the south end of the island. The renovations included new bridge decking, sidewalks and pedestrian walkways.

## THE SOLUTION

A grating manufacturer was awarded the contract for supplying well over eight (8) truckloads of galvanized steel industrial grating and plank grating for the new bridge decking, sidewalks and pedestrian walkways. *SlipNOT*® Metal Safety Flooring’s slip resistant coating was required for the new sidewalk grating being installed on the bridge.

Aluminum ADA punched plank grating with *SlipNOT*® was specified for the sidewalk grating because of the extreme durability and non-slip properties it consistently provides in all elements. In total, over 9,000 square feet of 2-1/2” x 3/16” aluminum extruded plank grating was coated with *SlipNOT*®’s Medium Grade 2 slip resistant aluminum coating. Aluminum plank grating was chosen for the sidewalk grating because of the non-corrosive qualities and the weightlessness.

*SlipNOT*® quickly turned around each shipment of the plank grating as it was received. The sidewalk grating was sent to *SlipNOT*® in several shipments to ensure quick lead times without any backups or delays in processing.

## THE IMPACT

The plank grating replaced the deteriorating concrete walkways with ease and has proven to be the invaluable choice for sidewalk grating on the newly renovated bridge. *SlipNOT*® plank grating has provided safety in any direction. Whether coming or going, the Wayne County Bridge will always maintain unmatched sidewalks.