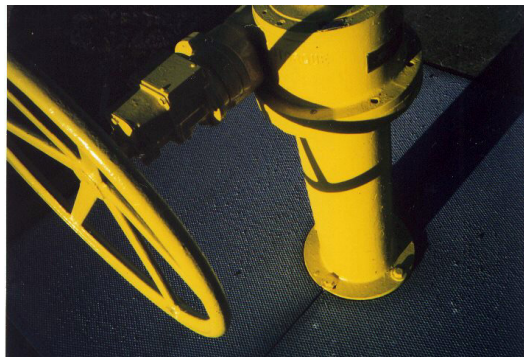


# CITY OF MONROE

MONROE, MI

*SlipNOT® Provides Slip-Resistant Galvanized Steel Grating for Water Treatment Plant*



## THE SITUATION

Monroe, Michigan is located in southern Michigan and is home to nearly 222,076 residents. The City of Monroe Wastewater Treatment Plant (WWTP) maintains the wastewater within the city to meet the regulations of the National Pollutant Discharge Elimination System (NPDES). The City of Monroe WWTP performs the stages of wastewater treatment such as primary treatment which consists of removing settled and floating materials from wastewater, secondary treatment which removes dissolved and suspended biological matter and tertiary treatment which is further treatment to allow the water to reenter water systems.

The City of Monroe WWTP was seeking a solution to replace slippery grating at their WWTP facility to help keep workers on their feet while utilizing the grating area. The City of Monroe needed a corrosion resistant, long lasting and minimal maintenance material.

## THE SOLUTION

SlipNOT® Metal Safety Flooring provided the City of Monroe WWTP with slip resistant galvanized steel grating for their facility. Galvanized steel grating provided the City of Monroe with a corrosion resistant solution that could withstand installation in harsh weather environments. The slip resistant galvanized steel grating also requires minimal maintenance which was ideal in the outdoor and hard to access area. Slip resistant galvanized steel grating was the optimal solution for the project needs.

## THE IMPACT

Galvanized steel slip resistant grating provided the City of Monroe WWTP with a slip resistant solution that was long lasting, low maintenance and corrosion resistant which was ideal for an outdoor application in Michigan. SlipNOT® has provided WWTP workers with a safe walking area for years to come.