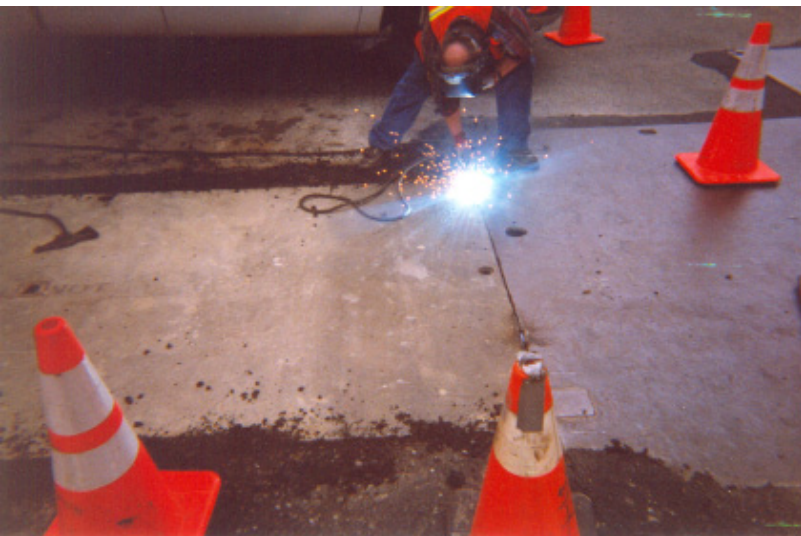


SEATTLE CITY LIGHT

SEATTLE, WA

Slip Resistant Steel Road Plates Protect Motorists on Seattle Streets



THE SITUATION

People are always commuting. Whether it be by car, train, bike or boat, the citizens of Seattle are constantly on the move. People expect to be safe, whether its on their way home from work, or to the nearest grocery store. When it came time for the Seattle City Light to install road plates on various streets throughout the city, they called upon *SlipNOT*® to provide them with the safety and security they were seeking.

THE SOLUTION

Seattle City Light chose *SlipNOT*® steel road plates to install in existing street areas. The plates were 1-1/4" x 6' x 12' steel plates painted yellow, and were fabricated with eight lifting holes in each plate. *SlipNOT*® steel was chosen because it has a file hard surface between 55 - 63 on the Rockwell "C" scale and a bond strength of at least 4000 psi. The steel was painted yellow protect it from rust and corrosion, and to make it noticeable to motorcyclists so they would be able to see and expect the plate rather than hit it without warning. The yellow coloring would also make the plates noticeable to motorists in rainy or snowy conditions. *SlipNOT*® steel needs to be painted or galvanized to protect it from rust and corrosion.

THE IMPACT

Seattle relies on *SlipNOT*® to keep its motorists safe while on the roads. The long lasting and durable *SlipNOT*® surface will keep motorists safe for years to come. Even when submerged in water, *SlipNOT*® steel retains its slip resistance. *SlipNOT*® steel road plates were the smart choice for Seattle City Light.