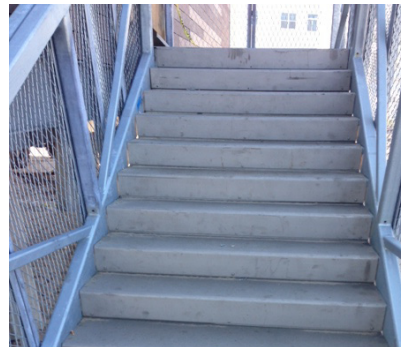
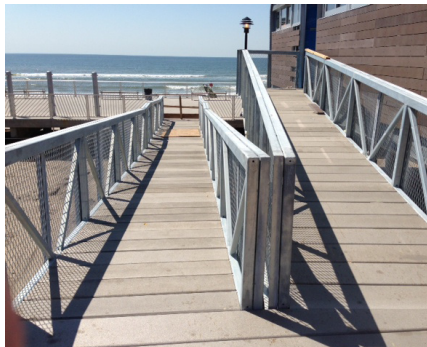


HURRICANE SANDY RELIEF

CONEY ISLAND, NY

Slip Resistant Stainless Steel Products for Hurricane Sandy Relief Project



THE SITUATION

Hurricane Sandy was the deadliest and most destructive 2012 Atlantic hurricane, as well as the second costliest hurricane in the United States. Sandy developed from a tropical wave in the western Caribbean Sea to a Tropical Storm six hours later and intensified to a hurricane. Sandy had reported winds spanning 1,100 miles and at least 286 people were killed along the path of the storm.

Sandy ended up striking Jamaica, Haiti, the Dominican Republic, Puerto Rico, the Bahamas, Canada and the United States. The assessed damage in June 2013 was over \$68 billion; a total only surpassed by Hurricane Katrina. In the United States alone, Sandy affected 24 states, including the entire eastern seaboard from Florida to Maine across the Appalachian Mountains to Michigan and Wisconsin, with severe damage in New Jersey and New York. New York City was hit October 29th, flooding streets, tunnels, subway lines and cutting power in and around the city.

Ever since Hurricane Sandy hit the east coast, there have been countless construction projects. One in particular is Coney Island; the peninsula and beach on the Atlantic Ocean in southwestern Brooklyn, New York City. Coney Island is well known as the site of amusement parks and a seaside resort.

THE SOLUTION

A metal manufacturing company was contacted in finding a slip resistant and durable solution to Coney Island's newly built "comfort stations", which include restrooms, showers and changing areas for pedestrians. The comfort stations are connected to a wooden boardwalk with café's and restaurants.

SlipNOT® was contacted for the project and ended up providing a large amount of slip resistant 316 Grade 2 stainless steel plates and stair treads for the walkways. Stainless steel was the most reliable, corrosion resistant and aesthetically pleasing choice for the project and it's longevity through any type of weather condition was appealing to the city.

THE IMPACT

In a recreational area like Coney Island, public safety is crucial due to the large amounts of water present at this site. Slips and falls were a major concern considering pedestrians would be dragging sand, water and other slippery substances onto the walking surfaces. The stainless steel products fit in seamlessly with the overall look and feel of the island.