

# SLIPNOT® SPECIFICATIONS FOR GRADE 1



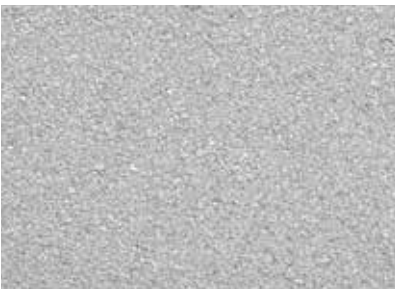
## STEEL

SLIPNOT®, grit-free, steel Grip Plate® / Grip Grate® Grade #1 – Fine, as manufactured by Traction Technologies Holdings, LLC (1-800-SLIPNOT) per drawings. Steel Grip Plate® / Grip Grate® shall incorporate an anti-slip primarily martensitic steel surface covering 100% of the substrate consisting of a random hatch matrix with a surface hardness between 55 – 63 on the Rockwell “C” scale and a surface to substrate bond strength of at least 5,000 psi. The non-slip surface shall have a minimum coefficient of friction of 0.8 and be listed as slip resistant by Underwriters Laboratories.



## STAINLESS STEEL

SLIPNOT®, grit-free, stainless steel Grip Plate® / Grip Grate® Grade #1 – Fine, as manufactured by Traction Technologies Holdings, LLC (1-800-SLIPNOT) in alloy and specifications per drawing. Stainless steel Grip Plate® / Grip Grate® shall incorporate an anti-slip stainless steel surface covering 100% of substrate consisting of a random hatch matrix with a surface hardness between 55 – 63 on the Rockwell “C” scale and a surface to substrate bond strength of at least 7,500 psi. The non-slip surface shall have a minimum coefficient of friction of 0.8 and be listed as slip resistant by Underwriters Laboratories.



## ALUMINUM

SLIPNOT®, grit-free, aluminum Grip Plate® / Grip Grate® Grade #1 – Fine, as manufactured by Traction Technologies Holdings, LLC (1-800-SLIPNOT) in alloy and specifications per drawing. Aluminum Grip Plate® / Grip Grate® shall incorporate an anti-slip aluminum surface covering 100% of substrate consisting of a random hatch matrix and a bond strength of at least 2,000 psi. The non-slip surface shall have a minimum coefficient of friction of 0.8 and be listed as slip resistant by Underwriters Laboratories.